

## Outreach Opportunities

### ■ Food Pantry Volunteers Needed



2nd Saturday—June 8, 11:30am  
Comanche Elementary, 8200 Grant Ave, OPKS  
Scan the QR for more info and volunteer signups. A link is also included your weekly email.

## Special Book Signing May 30!

### ■ All are invited to Mthr Kelly's book signing!

*Grace in the Rearview Mirror: Four Women Priests on Brokenness, Belonging, and the Beauty of God*

May 30, 6-8pm, at Seven Stories Bookstore  
11109 Johnson Dr, Shawnee KS

The Rev. Kelly Demo will have a book signing on Thursday, May 30, and copies of her book "Grace in the Rearview Mirror" will be available for purchase.

## Try Out Choir or Band this Summer!

### ■ Beginning May 26: 9am rehearsal/10am service

All are invited to try Choir or Band for the summer. Email Julieanne and get signed up. [jstapleton@stthomasop.org](mailto:jstapleton@stthomasop.org)

## Donating to St. Thomas

Give online securely via the QR code or visit the St. Thomas website—<https://stthomasop.org> and click on the "Donate" tab.



## This Sunday during Formation Hour

### ■ Children's Christian Formation—9:45am

Education Wing—Someone will greet you and show you the way!

- \* **This Sunday, May 19:** Final day of Godly Play for Spring.
- \* **May 26:** Summer Program Kickoff. 10am Worship, then Food & Fun following! The nursery will be from 9:30-11:30am.

### ■ Adult Formation—We will be on break for a while.

Please take advantage of the time in between services to connect with your fellow church members!

## Children & Youth

### ■ St. Thomas Children's Choir "Tacos & Popsicles" Party Thurs, May 23, 5:30pm!

If questions, contact Ms. Julieanne Stapleton, Director of Music ([jstapleton@stthomasop.org](mailto:jstapleton@stthomasop.org))

### ■ SUMMER@St. Thomas Camp

**Enrollment is NOW!** Click on the QR code for more information including links to forms!



**Episcopal Mega Camp:** June 2-8 (Overnights)  
**Reaching Out to the Community Camps (ROTC):**

- \* Grades 6-8: June 10-14
- \* Grades 9-12: June 17-21 (Overnights)
- \* Grades 3-5: July 22-26

**Vacation Bible Camp:** Sunday, June 23 – Thurs June 27, 5-8pm

**Arts Camp:** July 29-August 2

### ■ Celebrating Our Children & Youth!

\*\* *Alli Phillips got 7th place at National Leadership Conference!*

• • • •

We know your kiddos are up to GREAT THINGS! Let us hear from you and celebrate with them! Email any special news about your child or youth to Barbara—[bmccall@stthomasop.org](mailto:bmccall@stthomasop.org) or Kelly—[kdemo@stthomasop.org](mailto:kdemo@stthomasop.org) so that we may add it to our newsletters!



## The Day of Pentecost Worship Services - May 18 & 19 Saturday – 5:30pm Sunday – 8:45 and 11:00am

Join us for Coffee Hour in Parish Hall 1 after both services.

Children's Chapel (geared toward ages 3-10) during Sunday services.

Nursery care on Sunday for children ages 6 months thru 4 yrs from 8:15am -12:15 (or conclusion of the 11am service).

All services are live-streamed and available afterward on [www.youtube.com/c/stthomasop](https://www.youtube.com/c/stthomasop) & [www.facebook.com/stthomasop](https://www.facebook.com/stthomasop)



## Calendar for May 17-25

**Fri, May 17:** Thom's Helpers, 10:30am-1:30pm, PH 1/Kitchen/Sacristy; Memorial Service, 2-4pm, Nave/PH 1, 2; Journeymen Sm Grp Reunion, 6-7pm, Dutra residence

**Sat, May 18: Pentecost begins.** Middlemen's Breakfast Grp, 9am, Big Biscuit; Prayer Shawl Sm Grp, 10am, Narthex; EMI Grp, 10-1, PH 3; Cancer Support Grp, 11-1, Asbly; Girl Scout Grp, 2-4pm, PH 2; Wedding Shower, 2-4pm, PH 1; Holy Communion 5:30pm, Nave

**Sun, May 19: Pentecost Sunday.** Nursery 8:15-12:15; Holy Communion at 8:45 and 11:00am, Nave; Children (Family Day) & Youth Formation, 9:45am, Educ Wing; Children's Family Day, 10:45-12:15pm, Parish Hall; Coffee Hours 10am and 12, PH 1; Immigration Ministries, 12-2pm, Asbly Rm; Mission Trip mtg, 12-1pm, PH 2

**Mon, May 20:** Feasibility Study Interviews, 10-2, Rm 137; Thom's Helpers, 10:30am-1:30pm, Asbly Rm, Kitchen/Sacristy; Finance Committee, 6pm, Asbly Rm; Vestry mtg, 6:45pm, Asbly; Westmont Board mtg, 6:30pm, PH 1; Stonehaven HOA, 6:30pm, PH 2

**Tues, May 21:** PEO mtg, 9-11:30am, Asbly; Organ reh, 10am-12; Feasibility Interviews, 4-8pm, Rm 137; Mom's Group, 5pm, Asbly Rm; Pinehurst HOA, 6-8:30pm, PH 1; Book Club, 7pm, Asbly Rm; Sword Guild practice, 7-9pm, PH 2

**Wed, May 22:** Staff mtg, 10am, Rm 137; Thom's Helpers, 10:30am-1:30pm, PH 1/Kitchen/Sacristy; Feasibility Interviews, 2-6pm, Rm 137; Voice Lessons, 2-4pm, Asbly Rm; Chancel Choir, 6:30-9pm, Nave

**Thurs, May 23:** PEO mtg, 12:30-3pm, PH 2; Feasibility Interviews, 3-8pm, Rm 137; Music lesson, 4-5pm, Asbly; Children's Choir, 5-6pm, Nave/PH; Praise Band, 6:30pm; Young Adult Sm Grp, 7m, PH 1; Classics Men's Sm Grp, 7pm, PH 3; Sword Guild, 7pm, PH 2; Mental Health & Wellness mtg, 7:15pm, Zoom

**Fri, May 24:** Feasibility Interviews, 10-2, Rm 137; Thom's Helpers, 10:30am-1:30pm, PH 1/Kitchen/Sacristy

**Sat, May 25:** Prayer Shawl Sm Grp, 10am, Narthex; Holy Communion 5:30pm, Nave

*Please contact Justin Smith to schedule your meeting or event — [jsmith@stthomasop.org](mailto:jsmith@stthomasop.org) or 913-451-0512.*

## Vestry has started Discernment

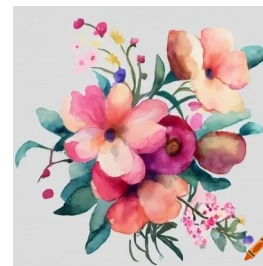
The Vestry of St Thomas has started the process of discerning some longer-term capital campaign needs and addressing the congregation's debt. We have engaged with Church Development and are conducting a feasibility study wherein all church members can offer feedback on proposed projects and make suggestions. We are exploring paying off the church's mortgage, office renovations, and much more. Please see your weekly "Connecting" email for more info.

Continue to look for emails and links to surveys—your participation is critical in this process.

*Flowers on the altar are  
given to the Glory of God  
and...  
in thanksgiving—from Alyson  
and Bruce Rawitch*

\* \* \* \*

*Altar flowers* are a beautiful way to remember a special occasion, anniversary, birthday, or memorial. You may sign up via the link in your weekly "Connecting with You" email, or write your name on the flower chart outside the church office.



## Small Groups meeting Next Week

Small Groups and Study Groups are a great way to connect with people at St. Thomas and to deepen your relationship with Jesus Christ. Some groups focus on particular interests and hobbies. Contact Mthr Kelly ([kdemo@stthomasop.org](mailto:kdemo@stthomasop.org)) or leaders below.

### ■ Journeymen Small Group Reunion

Friday, May 17, 6-7pm at the Dutra's

### ■ Middlemen's Group Breakfast

Sat, May 18, 9-10am, at The Big Biscuit

For men navigating faith, work, and family in Middle Life (~30s-50s). Come enjoy breakfast & conversation! Contact: John McCall [jmccall07@gmail.com](mailto:jmccall07@gmail.com)

### ■ Prayer Shawl Small Group

Every Saturday, 10am-12, Narthex (+ 1st Mondays, 7:30pm)

Knit, crochet, weave prayer shawls, hats, and 8" squares. Free lessons—Susan Strom [susanstrom15@gmail.com](mailto:susanstrom15@gmail.com) or 913-244-6402.

### ■ Mom's Group

Tues, May 21, 5-6:30pm, Asbly Rm. Childcare provided.

Open to those of any age or stage of the work of "mothering" for prayer, support and comradery. Katie Birchfield [katie.birchfield87@gmail.com](mailto:katie.birchfield87@gmail.com), Liz Knights [elizabethknights523@gmail.com](mailto:elizabethknights523@gmail.com)

### ● Young Adult Small Group

Thurs, May 23, 7pm, PH 1 (2nd & 4th Thursdays)

Young adults meet for support & friendship to see where God is leading them in life. Contact: Tim Pullin [pullin.tim.a@gmail.com](mailto:pullin.tim.a@gmail.com)

### ■ Classics Men's Small group

Thurs, May 23, 7pm, PH 3 (2nd & 4th Thursdays)

For retired and semi-retired men, we meet at the parish for conversation and Bible Study. Contact: Tom Meyers [tmeyers922@gmail.com](mailto:tmeyers922@gmail.com)