

Outreach Opportunities

■ **K2K Community Team Fundraiser**

Saturday, May 4, 2024—6-9pm at St. Thomas
Silent Auction—6pm, Dinner & Live Auction to follow

Kansas to Kenya is an African ministry that serves survivors of domestic violence—African food and entertainment! Tickets \$75/person or \$500/table—purchase via the QR or contact Deacon Fran—fwheeler@stthomasop.org or (913) 226-0540. Donated items for auction welcome. Contact Joe Bob Lake jlake10@kc.rr.com or (913) 530-6366.



■ **Food Pantry Volunteers Needed**



2nd Saturday—May 11, 11:30am
Comanche Elementary, 8200 Grant Ave, OPKS

Scan the QR for more info and volunteer signups. A link is also included your weekly email.

■ **Red Cross Blood Drive at St. Thomas**

Monday, May 13, 10am-3pm

A sign up link can be found in your weekly “Connecting with You” email.

Children & Youth

■ **Youth Group**

April 21, 6-8pm

Speakers will be coming to talk about the St. Thomas immigration ministries!

■ **St. Thomas Children’s Choir—Join Us!**

Rehearsals on Thursdays, 5-6pm

Contact: Ms. Julieanne Stapleton, Director of Music
(jstapleton@stthomasop.org)

■ **Youth Musicians Needed**

Singers and Instrumentalists for service Preludes & Postludes. ** Sign up by contacting Julieanne Stapleton.

■ **Parents of Seniors!**

Sunday, May 5, we’ll celebrate Senior Sunday!

Do you have a graduating senior (either from high school, technical school, college, or grad school)? Send a picture and their info so we can celebrate them! Email to kdemo@stthomasop.org

■ **SUMMER@St. Thomas Camp**

Enrollment is NOW! Click on the QR code below for more information including camp dates and links to forms!



● **Not sure how to use a QR code?**

Courtesy of Life Skills from Teens at St. Thomas

Open your phone’s camera. Point the camera at the QR code like you are going to take a picture (but don’t take a picture). Either a yellow link or just a web address block will pop up. Touch that link and it should magically take you to the page you are looking for! This QR will take you to a short video, and a link is also included in your weekly “Connecting with You.”



Worship Services - April 20 & 21

Please welcome The Rev. Peter Deveau as he celebrates services this weekend.

Saturday – 5:30pm

Sunday – 8:45 and 11:00am

During the 8:45 service you will hear selections from “Joseph and the Amazing Technicolor Dreamcoat”

Join us for Coffee Hour in Parish Hall 1 after both services.

Children’s Chapel (geared toward ages 3-10) during Sunday services.

Nursery care is available on Sunday for children ages 6 months thru 4 yrs from 8:15am -12:15 (or conclusion of the 11am service).

All services are live-streamed and available afterward on www.youtube.com/c/stthomasop & www.facebook.com/stthomasop

This Sunday during Formation Hour

■ **Children & Youth Formation Groups—9:45am**

Children’s Christian Formation

Education Wing—Someone will greet you and show you the way! Children’s Godly Play Circles resume.

Youth Christian Formation

* Middle School - "Path to Confirmation" in Assembly Room (East end of the Educ. Hall).

* High School - "Giving Project"

Next Sunday—11am service



■ **Sunday, April 28:** Confirmation will take place during the 11am service with Bishop Cathleen Chittenden Bascom presiding. You will also hear selections from “The Messiah” presented by the Chancel Choir, soloists, and orchestra.

Calendar for April 19-27

Fri, 19: Thom's Helpers, 10:30am-1:30pm, PH 1/Kitchen/Sacristy; SCA, 7pm, PH 1

Sat, Apr 20: Women's Group, 9am, Rm 137; Prayer Shawl Sm Grp, 10am, Narthex; PEO Chocolate Party, 11am-3pm, PH 1-3; Holy Communion 5:30pm, Nave

Sun, Apr 21: Nursery 8:15-12:15; Holy Communion at 8:45 and 11:00am, Nave; Adult Formation, 10am, PH 2; Children & Youth Formation, 9:45am, Educ Wing; Coffee Hours 10am and 12, PH 1; Youth Group, 6-8pm, Nave/PH/Narthex

Mon, Apr 22: Thom's Helpers, 10:30am-1:30pm, PH 1/Kitchen/Sacristy; Outreach Committee, 6:30pm, PH 1

Tues, Apr 23: Organ practice, 10am-12; PEO mtg, 12:30-3pm, Asbly Rm; Sword Guild practice, 7-9pm, PH 2

Wed, Apr 24: Staff mtg, 10am, Rm 137; Thom's Helpers, 10:30am-1:30pm, PH 1/Kitchen/Sacristy; Power of Myth Study, 10:30-11:40, Asbly Rm; Voice Lessons, 2-4pm, Asbly Rm; Chancel Choir, 6:30-9pm, Nave

Thurs, Apr 25: Friendship of Women, 10:30am, Asbly Rm; PEO mtg, 12:30-3pm, PH 2; Music Lesson, 4pm, Asbly Rm; Children's Choir, 5pm, Nave; Praise Band, 6:30pm; Young Adult Sm Grp, 7m, PH 1; Classics Men's Sm Grp, 7pm, PH 3; Sword Guild, 7pm, PH 2

Fri, Apr 26: Seder Prep (Faith Club), 8am-3pm, PH 1-3, Kitchen; Thom's Helpers, 10:30am-1:30pm, PH 1/Kitchen/Sacristy

Sat, Apr 27: Faith Club Seder Prep, 8am-6:30pm, PH 1-3/Kitchen; Middlemen's Grp Breakfast, 9am, Big Biscuit; Prayer Shawl Sm Grp, 10am, Narthex; "Messiah" rehearsal, 1-3pm, Nave; Holy Communion 5:30pm, Nave; Faith Club Seder Dinner, 6:30-8pm, PH 1-3/Kitchen

Please contact Justin Smith to schedule your meeting or event — jsmith@stthomasop.org or 913-451-0512.

Donating to St. Thomas

Give online securely via the QR code or visit the St. Thomas website—<https://stthomasop.org> and click on the "Donate" tab.



Brick Memorials

■ Apostle's Garden **BRICK MEMORIALS**

Personalize a 5" X 8" brick paver in honor of a special person(s) or event in your life. Bricks are \$40, payable to St. Thomas Church. You may pay by using the form via the QR code or by check with a memo of "Apostle's Garden Brick". More info is included on the form.

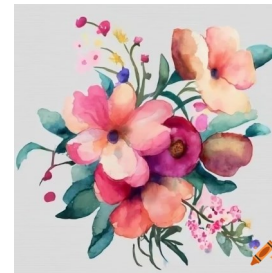


*Flowers on the altar are
given to the Glory of God
and . . .*

*Celebrating 46 years and blessings
received—from Kathie &
Rick Warner*

* * * *

Altar flowers are a lovely way to remember a special occasion, anniversary, birthday, or memorial. You may sign up via the link in your weekly "Connecting" email, or write your name on the flower chart outside the church office.



Next Week: Small Grps & Study Grps

■ **Women's Group**

Sat, Apr 20, 9am, Rm 137 (1st & 3rd Saturdays)

Join in reading Chapter 1 of "Grace in the Rearview Mirror," authored by Kelly Demo. Fellowship & connection with women from St. Thomas & community. Contact: Linda Pickett mcpicketts2@gmail.com

■ **Prayer Shawl Small Grp**

Sat, Apr 20 & 27, 10am-12, Asbly Rm or Narthex
(Meets every Sat, 10am-12; 1st Mon, 7:30-9pm)

Knit, crochet, weave prayer shawls, hats, and 8" squares. Free lessons—contact Susan Strom susanstrom15@gmail.com or 913-244-6402

■ **Wednesday Study—"The Power of Myth"**

Every Wednesday, 10:30-11:40am, Asbly Rm (meets weekly)

We are studying Joseph Campbell's "The Power of Myth" through May 15, then break for summer. Contact: Jan at 913-522-7938 janws1244@gmail.com or Suzie at 785-979-0606 suzietm@yahoo.com.

■ **Thursday Study—"The Friendship of Women: The Hidden Tradition of the Bible"**

Every Thursday, 10:30am, Asbly Rm (meets weekly)

Contacts: Sheryl sjroller@gmail.com or 913-908-4130 or Susan susanstrom15@gmail.com or 913-244-6402.

■ **Young Adult Small Group**

Thurs, April 25, 7pm, PH 1 (2nd & 4th Thursdays)

Contact: Tim Pullin pullin.tim.a@gmail.com

■ **Classics Men's Small Group**

Thurs, April 25, 7pm, PH 2 (2nd & 4th Thursdays)

For retired and semi-retired men.

Contact: Tom Meyers tmeyers922@gmail.com

■ **Middlemen's Small Group Breakfast**

Saturday, April 27 - 9am

The Big Biscuit—8520 W 135th St, OP, KS 66223

For men navigating faith, work, and family in Middle Life (~30s-50s). 4th Saturday each month for breakfast. Dads - come enjoy breakfast and conversation! Contact: John McCall jmccall07@gmail.com