

## Children & Youth

- **Acolyte Training is now October 22, 12-3pm**  
Current acolytes and any youth in 3-12th grade who would like to be an acolyte is strongly encouraged to join us. If you can't attend but want to be an acolyte (or are already) please contact Mthr. Kelly at [kdemo@stthomasop.org](mailto:kdemo@stthomasop.org).

- **Celebrating Our Children & Youth!**

We know your kiddos are up to GREAT THINGS! We want to hear and celebrate with them! Please brag away! Email any special news about your child or youth to Barbara—[bmccall@stthomasop.org](mailto:bmccall@stthomasop.org) or Kelly—[kdemo@stthomasop.org](mailto:kdemo@stthomasop.org) so that we may add it to our news!

## HELP WANTED

- **Nursery Caregiver (18+)**

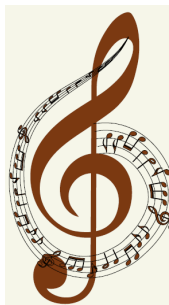
Seeking caregiver for members ages 6 months through 4 years on Sunday mornings & occasional other hours. \$15- 20 per hour + paid training. If you know someone who may be interested, please contact Barbara McCall, at [bmccall@stthomasop.org](mailto:bmccall@stthomasop.org) or 913-909-7318.

*\*Position is also advertised on Care.com, Indeed.com, Nextdoor.com and through Jo Co Comm College. If you know of other outlets (neighborhood social media or places to post (community boards), please reach out to Barbara.\**

## Join a Music Team!

- Chancel Choir, Wed, 7-8pm
- Praise Band, Thurs, 6:30-7:30pm
- St. Thomas Children's Choir, Thurs, 5:15-6pm
- Youth Team, Sunday nights at Youth Group, 6-8pm

Questions? Contact Julieanne Stapleton, Director of Music—[jstapleton@stthomasop.org](mailto:jstapleton@stthomasop.org)



## Sunday Morning Christian Education

- **Adult Forum**  
9:45am in Parish Hall 2  
Grab a cookie and beverage from Coffee hour and join in on some interesting topics.
- **Godly Play—Preschool thru Elementary:**
  - \* Preschool-Kindergarten: Rm 143/144 (across from Nursery)
  - \* 1st/2nd/3rd Grades: Rm 133/134 (where ofc & educ halls meet)
  - \* 4th/5th Grades: Rm 137 (on left from the "T" intersection)
- **Youth Christian Formation Groups:**
  - \* Middle School - "Path to Confirmation" in Assembly Room (East end of the Educ. Hall).
  - \* High School - "The Giving Project": "Mark Ash" Youth room (Basement - east end of Ed. Hall)

## Altar Flowers



**Flowers on the altar are given to the Glory of God**

Sign up via the QR code or by entering your name on the flower chart outside the church office.



## Welcome/Connect Events—Coming Soon!

- **Nov. 11 & 12 - Ministry Fair, Halls 1, 2, 3**  
Be sure to attend to see all the ministries we offer at St. Thomas and how we serve our parish members as well as our community.
- **Nov. 12 - Newcomer Lunch in Asbly Room**  
All new members and visitors are invited to attend a lunch to learn more about St. Thomas and we can learn more about you.



## This Weekend

- **Saturday, October 14**  
Holy Communion, 5:30pm
- **Sunday, October 15**  
8:45 & 11:00am: Holy Communion  
Coffee Hour after both services, PH 1  
9:45am: Adult Forum with Bishop Bascom, Children/Youth Sun School  
6-8pm: Youth Group in Nave, Parish Hall, Narthex

Children's Chapel: (geared toward ages 3-10) is available during the Sunday services.

Nursery Care: for children ages 6 mon. thru 4 years on Sundays. However, we are experiencing a staffing transition, so this service may be unavailable. Please see the nursery door or bulletin board for information about Nursery availability, and remember, *all of God's Children at any age are welcome in our worship services!*

All services are live-streamed and available to watch afterward on [www.youtube.com/c/stthomasop](https://www.youtube.com/c/stthomasop) and [www.facebook.com/stthomasop](https://www.facebook.com/stthomasop)

## All-Parish Events coming Soon!



- **Trunk or Treat**  
Sunday, October 29, 2-4pm  
Join St Thomas youth to pass out treats (1:45) to the little ones. Bring a friend for goodies and fun!

- **Parish Hayride**  
Sunday, November 5, 5-8pm  
Sharpe's in Bucyrus KS. Register soon!



## Save these Dates!

- **Food Pantry at Comanche**  
2nd Saturdays—Oct 14, 11:30am—2pm  
Comanche Elementary, 8200 Grant Ave, OPKS  
Scan the QR for more info and volunteer signups. A link is also found in your weekly email.
- Kansas to Kenya Ministry (K2K) / Diocese of KS  
**K2K Charity Golf Tournament**  
Sunday, Oct 15, 4pm, at Falcon Valley Golf Course in Lenexa  
Fundraiser for Agatha Amani House in Kenya, a safe home for abused women. Register with the QR code or in your weekly email.
- **No Place Like Home screening** Special Event  
Thursday, Oct 26, 7pm, Parish Hall 2  
St Thomas will host a screening of this film about the challenges for acceptance & compassion that LGBTQ people face. Creators of the film will be there also to answer questions. Please join us!
- **Fall Women's Retreat**  
Oct 28, 9am-4pm, at Tall Oaks Conf Ctr  
Register via the QR code or with a link found in your weekly emails. Questions? Mthr. Kelly Demo—[kdemo@stthomasop.org](mailto:kdemo@stthomasop.org)



## St Thomas to Host IHN Guests

- Interfaith Hospitality Network of Johnson County (IHN)  
**Volunteers Needed for IHN Host Week**  
October 29 through November 5  
Trained volunteers can sign up for positions via the QR code or with the link in your weekly email. Questions? Dola McNown 913-526-3573/[dolamcnown49@gmail.com](mailto:dolamcnown49@gmail.com); or Margaret Walkenshaw 913-302-2018/[mwalkenshaw@kc.surewest.net](mailto:mwalkenshaw@kc.surewest.net)



## This Week's Calendar

- Sat, Oct 14:** Stonehaven HOA mtg, 9am-1pm, PH 2; Prayer Shawl Sm Grp, 10am, PH 1; Comanche Food Pantry, 10:30am; Choir/Band party, 5-9pm, Julieanne Stapleton's; Holy Communion, 5:30pm, Nave; 2nd Saturday Reception, 6:30pm, PH 1
- Sun, Oct 15:** Holy Communion, 8:45am and 11:00 in Nave; Coffee Hours after each service, PH 1; Adult Forum, 9:45am, PH 2; Children/Youth Sunday School 9:45am, Educ Wing; Youth Group, 6-8pm, Nave, PH, Narthex
- Mon, Oct 16:** Thom's Helpers, 10:30am-1:30pm PH 1 & Kitchen; Outreach Committee, 6:30pm, PH 2
- Tues, Oct 17:** Walking the Mourner's Path, 6:30-8pm, Narthex; Book Club, 7pm, PH 1; Contemplative Prayer Sm Grp, 7pm, Nave; Sword Guild practice, 7pm PH 2
- Wed, Oct 18:** Staff meeting, 10am, Lobby; Thom's Helpers, 10:30am-1:30pm, PH 1 + Kitchen; Wed. Study Grp, 10:30-12, Asbly Rm; Voice Lessons, 2-3:30pm, Asbly Rm; Westmont Annual mtg, 6:30-8pm, PH 1; Pinehurst HOA mtg, 6-8pm, PH 2; Chancel Choir, 7-8pm, Nave
- Thurs, Oct 19:** New Testament Bible Study, 10:30am, Asbly Rm; Music lesson, 4-4:45pm, Nave; Children's Choir, 5:15-6pm, Nave; Praise Band, 6:30pm, Nave; PEO mtg (McCall), 6:30-9pm, Asbly Rm; Explorers Sm Grp, 7pm, PH 2; Sword Guild, 7pm, PH 3
- Fri, Oct 20:** Thom's Helpers, 10:30am-1:30pm in PH 1 & Kitchen; Revare Wedding Rehearsal, 5-6pm, Nave; SCA, 7pm, PH 1
- Sat, Oct 21:** Women's Group, 9-10am, Asbly Rm; Prayer Shawl Sm Grp, 10am, PH 1; Revare Wedding, 3:30-4:30pm, Nave; Holy Communion, 5:30pm, Nave

*Meetings, activities, and events must be cleared with Justin Smith in the church office. [jsmith@stthomasop.org](mailto:jsmith@stthomasop.org) or 913-451-0512.*

## Donating to St. Thomas

Give online securely via the QR code or visit the St. Thomas website—<https://stthomasop.org> and click on the "Donate" tab.



**For Paper Recycling at St. Thomas:** We are requesting donations for paper grocery bags with handle, preferably strong like HyVee bags.



## Small Groups meeting next week

- **Contemplative Prayer Small Group**  
Tuesday, Oct 17, 7pm, in Sanctuary  
This group meets to delve deeper into different forms of prayer and meditation. We meet the 1<sup>st</sup> and 3<sup>rd</sup> Tuesday of the month in the sanctuary of St. Thomas at 7pm. Contact: Lynn Powell [lynn@thechildrensclinic.net](mailto:lynn@thechildrensclinic.net)
- **Explorers Small Group**  
Thursday, Oct 19, 7-8pm, in PH 2  
This group meets on the 1<sup>st</sup> & 3<sup>rd</sup> Thursday at St. Thomas, and also takes day trips. They are interested in exploring the Scripture and the World around them, and are involved with emergency relief bags. Contact: John McNown [johnmcnown44@gmail.com](mailto:johnmcnown44@gmail.com)
- **Women's Group**  
Saturday, Oct 21, 9-10am, Assembly Rm (3rd Saturdays)  
Contact: Emily Wilson [ewilso28@gmail.com](mailto:ewilso28@gmail.com)
- **Prayer Shawl Small Group**  
Saturday, Oct 21, 10am-12pm, PH 1  
Every Saturday this group knits prayer shawls together which are blessed during special services at St. Thomas and are given to those who are ill or have lost a loved one. Contact: Sue Strom [susanstrom15@gmail.com](mailto:susanstrom15@gmail.com)

## Thanksgiving Dinner returns!

- **November 23, 12-3pm at St. Thomas**

No need to cook! Come and enjoy food and fellowship. We will be serving a traditional meal with all the trimmings in our Parish Hall. Come alone or with the whole family. We will also offer our meal to the community. We can use some help all day or for a couple of hours with cooking, serving or clean up.—just sign up with the QR code. No need to RSVP to eat—there will be plenty of food.

Contact: Donna Fye 913-963-5815  
[djfye@gmail.com](mailto:djfye@gmail.com)

